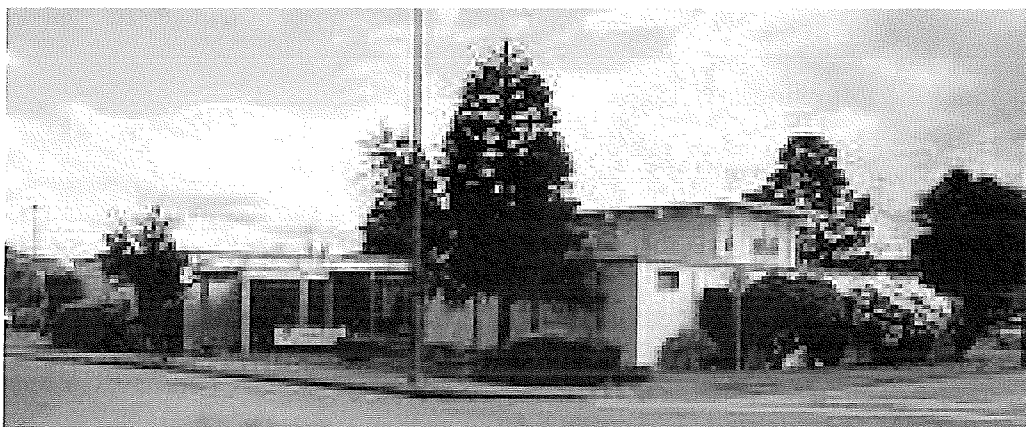


# GENERAL PRICE LIST



## Coos Bay Chapel Cremation & Funeral Service

*People who know you. People you can rely on today and tomorrow.*

685 Anderson Ave.  
Coos Bay, Oregon 97420  
Telephone: 541-267-3131  
Fax: 541-267-0497  
License Number: 8701

Prices effective as of January 1, 2020

The goods and services shown below are those we provide to our customers. You may choose only the items you desire. However, any funeral arrangements you select will include a charge for basic services and overhead. If legal or other requirements mean you must buy any items you did not specifically ask for, we will explain the reason in writing on the statement we provide describing the funeral goods and services you selected.

---

## MINIMUM SERVICES OF THE FUNERAL DIRECTOR AND STAFF

This fee for our basic services and overhead will be added to the total cost of the funeral arrangements you select. (This fee is already included in our charges for direct cremations, immediate burials, and forwarding or receiving remains.) 995.00

The fee includes the following:

Personnel available 24 hours a day, 365 days a year to respond to initial call

Arrangement conference

Coordinating service plans with cemetery, crematory, and/or other parties involved in the final disposition of the deceased

Clerical assistance in the completion of various forms and permits associated with a funeral

Also covers overhead, including facility maintenance, equipment and inventory costs, insurance and administration expenses, and governmental compliance

---

## PREPARATION OF THE BODY

Except in certain special cases, embalming is not required by law. Embalming may be necessary, however, if you select certain funeral arrangements, such as a funeral with viewing. If you do not want embalming, you usually have the right to choose an arrangement that does not require you to pay for it, such as direct cremation or immediate burial.

Embalming 395.00

Dressing, casketing and/or cosmetizing of deceased 195.00

Bathing and disinfecting of deceased 95.00

Special care for autopsied cases 195.00

Refrigeration per day (It is the policy of our firm to require refrigeration of unembalmed remains after 24 hours.) (per day after 24 hrs) 195.00

Restoration when necessary 50.00/hour

---

**USE OF FACILITIES AND STAFF**

Use of facilities and staff services for visitation (per day) (Our services include set up of visitation area, placement of encased remains, display of floral arrangements, supervision of and attendance during the visitation.)	195.00
Use of facilities and staff services for funeral service in our chapel (Our services include coordinating the funeral arrangements, supervision of the funeral, and staff to assist with the funeral ceremony.)	495.00
Staff services for funeral service at other facility (Our services include coordinating the funeral arrangements, supervision of the funeral, and staff to assist with the funeral ceremony.)	495.00
Use of facilities and staff services for memorial service (without remains present) in our chapel (Our services include coordinating the memorial service arrangements, supervision of the memorial service and staff to assist with the service.)	495.00
Staff services for memorial service (without remains present) at other facility (Our services include coordinating the memorial service arrangements, supervision of the memorial service, and staff to assist with the service.)	95.00
Equipment and staff services for graveside service (Our services include accompaniment of remains to cemetery, supervision of graveside service, and staff to assist with the service.)	395.00

---

**TRANSPORTATION**

Transfer of deceased from place of death to funeral home (within a 25 mile radius) Additional distance will be charged at \$2.50 per mile.	395.00
Funeral vehicle (e.g. hearse) (within a 25 mile radius) Additional distance will be charged at \$2.50 per mile.	195.00
Service Vehicle (within a 35 mile radius) Additional distance will be charged at \$2.50 per mile.	150.00

---

## **FORWARDING REMAINS TO ANOTHER FUNERAL HOME**

This charge includes removal of remains, basic service of staff, transfer of remains, embalming (if requested), use of preparation room, bathing and disinfection of remains, dressing, and cosmetics of deceased (if requested), service vehicle, transportation to airport (within 25 mile radius) (excluding shipping charges and shipping containers). This charge does not include visitation or ceremonies. This charge applies to shipping within the continental U.S. only.	1495.00
---	---------

---

## **RECEIVING REMAINS FROM ANOTHER FUNERAL HOME**

This charge includes basic service of staff, transfer of remains to funeral home, transportation to local airport or other shipping destination (within 25 mile radius), and transportation of remains to cemetery or crematory. This charge does not include visitation or ceremonies.	995.00
---	--------

---

## **DIRECT CREMATION**

If you want to arrange a direct cremation, you can use an alternative container. Alternative containers encase the body and can be made of materials like fiberboard or composition materials (with or without outside covering). The containers we provide are alternative containers and other cremation containers, which include containers made of wood, containers made of fiberboard, and containers made of other composite materials. See descriptions below. We also offer a selection of cremation oriented caskets.	Range: 1400.00 To 5395.00
---	------------------------------------

Our charges for direct cremation (without ceremony) include removal of remains, refrigeration, transportation to crematory, service vehicle and minimum services of staff. The crematory fee is included.

Direct cremation with container provided by the purchaser (All such containers must meet any applicable state or crematory requirements).	1400.00
---	---------

Direct cremation with casket from our funeral home (in addition to cost of casket)	1400.00
--	---------

Direct cremation with Cardboard Alternative Container – heavy cardboard	1495.00
---	---------

---

## **IMMEDIATE BURIAL**

Our charges for immediate burial (without any rites or ceremonies at the funeral home, graveside or elsewhere) include removal of remains, transportation to cemetery, service vehicle and basic services of staff.	Range: 1495.00 To 5490.00
1. Immediate burial with container provided by the purchaser (All such containers must meet any applicable state or cemetery requirements).	1495.00
2. Immediate burial with casket selected from our facility. (In addition to cost of casket - see Casket Price List for casket prices).	1495.00

---

## **ALTERNATIVE CONTAINERS**

(Refer to the Casket Price List as provided at the funeral home.)	Range: 95.00 To 995.00
---	---------------------------

## **CASKETS**

(A complete price list will be provided at the funeral home.)	Range: 995.00 To 3995.00
---	-----------------------------

## **CREMATION CONTAINERS**

(Refer to the Casket Price List as provided at the funeral home.)

## **CREMATION ORIENTATED CASKETS**

(Refer to the Casket Price List as provided at the funeral home.)	Range: 295.00 To 495.00
---	----------------------------

## **OUTER BURIAL CONTAINERS**

(A complete price list will be provided at the funeral home.)	Range: 795.00 To 17095.00
---	---------------------------------

## **URNS**

(A complete price list will be provided at the funeral home.)	Range: 25.00 To 850.00
---	---------------------------

## **CLOTHING**

Range: 90.00 To 150.00
---------------------------

## OTHER

Estate fee	500.00
Evening, weekend, holiday fee	395.00
Reception room	195.00
Video tribute	200.00
Memorial book	45.00
Memorial folders	Range: 100.00 – 300.00
Acknowledgment cards	10.00
Bookmarks (each)	5.00
Cross or crucifix	20.00
Processing and mailing of cremated remains	125.00
Cremation fee	395.00

---

## PACKAGE OPTIONS

---

Although services may be selected from the itemized portion of the General Price List, the following list of commonly selected package services may help you select the appropriate arrangement.

NOTE: The following packages include only the items listed in the package. The merchandise you select and the cash advance items are additional.

---

# BURIAL OPTIONS

---

## **TRADITIONAL FULL SERVICE PACKAGE**

**2995.00**

*\*Itemized \$3410.00 Discount \$415.00*

Includes:

- Minimum services of funeral director and staff.
- Embalming.
- Other preparation: dressing, casketing and cosmetology.
- Use of facility for viewing visitation and service of the staff in supervising viewing visitation.
- Use of facility for funeral service and service of funeral director and staff for supervision in the funeral home chapel or a facility other than funeral home.
- Graveside committal service
- Removal of the deceased from the place of death to the funeral home within a 25 mile radius. Additional mileage will be charged \$2.50 per mile one way.
- Automotive Equipment: hearse, service vehicle.

This package does not include:

- Cash Advance Items
- Casket
- Cemetery expenses
- Printed material



---

**GRAVESIDE SERVICE WITH VISITATION  
PACKAGE**

**2495.00**

*\*Itemized \$2915.00 Discount \$420.00*

Includes:

- Minimum services of funeral director and staff
- Embalming
- Other preparation: dressing, casketing and cosmetology
- Use of facility for viewing visitation and service of the staff in supervising the viewing visitation
- Service of funeral director, staff and equipment necessary in supervising and directing the graveside service
- Removal of the deceased from the place of death to the funeral home within a 25 mile radius. Additional mileage will be charged \$2.50 per mile one way
- Automotive Equipment: hearse, service vehicle.

This package does not include:

- Cash Advance Items
- Casket
- Cemetery expenses
- Printed material

---

**GRAVESIDE SERVICE WITH NO VISITATION  
PACKAGE**

**1995.00**

*\*Itemized \$2520.00 Discount \$525.00*

Includes:

- Minimum services of funeral director and staff
- Refrigeration
- Other preparation: disinfection, dressing, casketing
- Service of funeral director, staff and equipment necessary in supervising and directing the graveside service
- Removal of the deceased from the place of death to the funeral home within a 25 mile radius. Additional mileage will be charged \$2.50 per mile one way
- Automotive Equipment: hearse, service vehicle.

This package does not include:

- Cash Advance Items
- Casket
- Cemetery expenses
- Printed material

---

## IMMEDIATE BURIAL PACKAGE

**1495.00**

*\*Itemized \$2125.00 Discount \$630.00*

Includes:

- Minimum services of funeral director and staff
- Refrigeration
- Other preparation: disinfection, dressing, casketing
- Removal of the deceased from the place of death to the funeral home within a 25 mile radius. Additional mileage will be charged \$2.50 per mile one way
- Automotive Equipment: hearse, service vehicle.

This package does not include:

- Cash Advance Items
- Casket
- Cemetery expenses
- Printed material

---

# CREMATION OPTIONS

---

## **TRADITIONAL SERVICE CREMATION PACKAGE**

**2495.00**

*\*Itemized \$3215.00 Discount \$720.00*

Includes:

- Minimum services of funeral director and staff
- Embalming
- Other preparation: dressing, casketing and cosmetology
- Use of facility for viewing visitation and service of the staff in supervising viewing visitation.
- Use of facility for funeral service and service of funeral director and staff for supervision in the funeral home chapel or a facility other than funeral home.
- Removal of the deceased from the place of death to the funeral home within a 25 mile radius. Additional mileage will be charged \$2.50 per mile one way.
- Cremation fee
- Automotive Equipment: service vehicle.

This package does not include:

- Cash Advance Items
- Cremation container
- Urn
- Printed material

---

**MEMORIAL SERVICE CREMATION  
PACKAGE**

**1995.00**

*\*Itemized \$2625.00 Discount \$630.00*

Includes:

- Minimum services of funeral director and staff
- Refrigeration
- Use of facility for memorial service and service of funeral director and staff for supervision in the funeral home chapel or a facility other than funeral home.
- Removal of the deceased from the place of death to the funeral home within a 25 mile radius. Additional mileage will be charged \$2.50 per mile one way.
- Cremation fee
- Automotive Equipment: service vehicle.

This package does not include:

- Cash Advance Items
- Cremation container
- Urn
- Printed material

---

## **DIRECT SIMPLE CREMATION PACKAGE**

**1495.00**

*\*Itemized \$2250.00 Discount \$755.00*

Includes:

- Minimum services of funeral director and staff
- Refrigeration
- Removal of the deceased from the place of death to the funeral home within a 25 mile radius. Additional mileage will be charged \$2.50 per mile one way.
- Cremation fee
- Minimum urn
- Automotive Equipment: service vehicle.

This package does not include:

- Cash Advance Items
- Printed material

---

## RECEIVING REMAINS PACKAGE

**995.00**

*\*Itemized \$1340.00 Discount \$345.00*

Includes:

- Minimum services of funeral director and staff
- Automotive Equipment: hearse, service vehicle
- Delivery to cemetery or crematory

This package does not include:

- Transportation from airport
- Additional services of funeral director and staff
- Cash Advance Items
- Printed material

---

## FORWARDING REMAINS PACKAGE

**1495.00**

*\*Itemized \$1935.00 Discount \$440.00*

Includes:

- Minimum services of funeral director and staff
- Embalming
- Removal from place of death to the funeral home within 25 mile radius.  
Additional mileage will be charged at \$2.50 per mile one way
- Automotive Equipment: service vehicle

This package does not include:

- Transportation to airport
- Additional services of funeral director and staff
- Outside funeral director expense
- Shipping expenses
- Cash Advance Items
- Printed material



## CASH ADVANCE ITEMS

Minister honorarium  
Musicians/Vocalist honorarium  
Airline fees  
Newspaper obituary notices fees  
Death Certificates fees  
Medical Examiners fees  
State Permit fee - mandatory  
Crematory fees  
Cemetery fees  
Outside funeral director fees  
Flowers  
Pictures/printing fees

NOTE: These are just a few examples of Cash Advance Items. There are many more that could apply, depending on the service you select.

